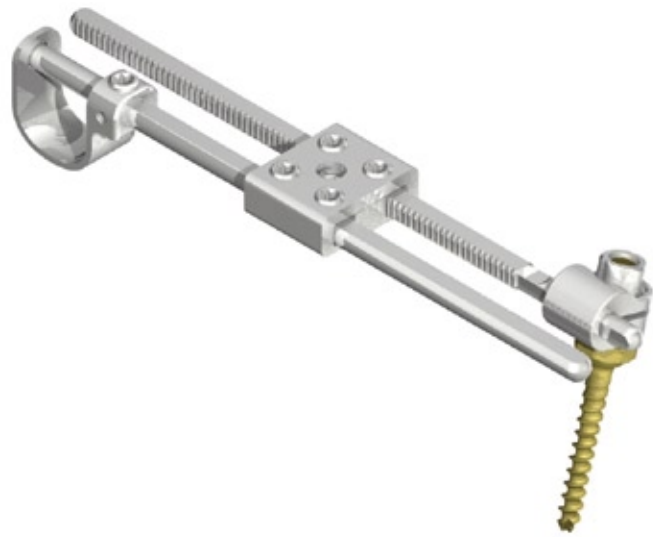




Distributed by:

PARADIGM SPINE

the movement in spine care



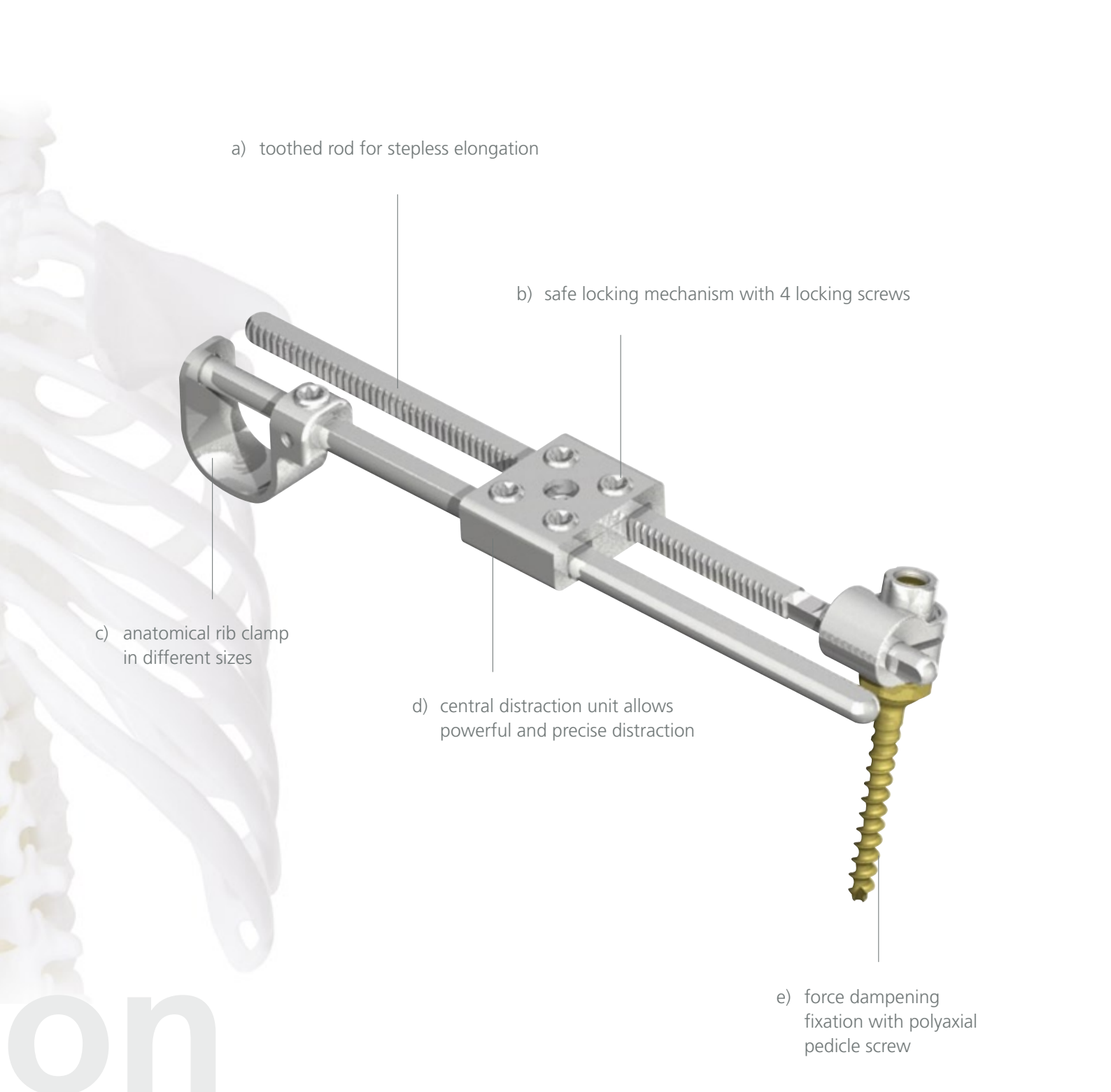
Growing Spine Profiler **GSP**™

Non Fusion Scoliosis



Non Fusion Scoliosis

- Low profile design; rods easily contourable to fit anatomy
- Central distraction unit allows powerful and precise distraction and simple length readjustment through small incision
- Variability – rib to rib or rib to spine assembly possible



a) toothed rod for stepless elongation

b) safe locking mechanism with 4 locking screws







c) anatomical rib clamp
in different sizes

d) central distraction unit allows
powerful and precise distraction

e) force dampening
fixation with polyaxial
pedicle screw

Indications:

- Chest wall defect
- Flail chest trauma
- Progressive congenital scoliosis
- Rib fusion with secondary chest wall compression
- Infantile or juvenile progressive scoliosis
- Hypoplastic thorax syndrome

GSP™ Implants			
	NUMBER	DESCRIPTION	
		DISTRACTION UNIT	
	GAI20000	GSP™ Distraction unit	
	DISTRACTION ROD		
	GAI30013	GSP™ Distraction rod	L: 130
	GAI30020	GSP™ Distraction rod	L: 200
	RIB CLAMP		
	GAI10012	GSP™ Rib clamp	size 12
	GAI10014	GSP™ Rib clamp	size 14
	GAI10016	GSP™ Rib clamp	size 16
	PEDICLE SCREW		
	SAI14026	Pedicule Screw	ø4.0, L26
	SAI14030	Pedicule Screw	ø4.0, L30
	SAI14034	Pedicule Screw	ø4.0, L34
	SAI14038	Pedicule Screw	ø4.0, L38
	SAI15026	Pedicule Screw	ø5.0, L26
	SAI15030	Pedicule Screw	ø5.0, L30
	SAI15034	Pedicule Screw	ø5.0, L34
	SAI15038	Pedicule Screw	ø5.0, L38
	NUT		
	SAI20000	Nut	
	FIXED CONNECTOR		
	GAI60000	GSP™ Fixed connector	

Manufactured by:



Distributed by:



Paradigm Spine GmbH
Eisenbahnstrasse 84
D-78573 Wurmlingen, Germany

Tel +49 (0) 7461 - 96 35 99-0
Fax +49 (0) 7461 - 96 35 99-20

info@paradigmospine.de
www.paradigmospine.com

Product not available in the USA